



## Drum Deheading Equipment & Accessories

Wizard® offers a complete line of fiber drum dechimers and steel drum deheading equipment and accessories.

# Wizard Units

## F-Series (Food Grade)

### Automatic Air

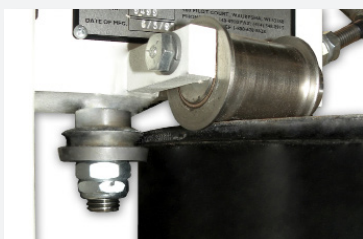
- ▶ Large quantity of drums
- ▶ 1/2 HP, Variable speed, 4 vane reversible air motor, 30:1 gear reducer
- ▶ Shipping weight: 84 lbs.
- ▶ Dimensions: 29" x 29" x 13"

### Manual Air

- ▶ Use in industrial settings with wet surfaces
- ▶ 1/2 HP, variable speed, 4 vane reversible air motor, 30:1 gear reducer
- ▶ 80-100 PSI, 25 CFM, airline filter and lubricator suggested
- ▶ Shipping weight: 80 lbs.
- ▶ Dimensions: 29" x 29" x 13"

### Electric

- ▶ Quiet operation
- ▶ 1/3 HP, 110V, 60Hz, single phase, full load amps 5.7 and 220 in/lbs torque (optional 220v, single phase, 50-60 Hz)
- ▶ Shipping weight: 80 lbs.
- ▶ Dimensions: 29" x 29" x 13"



### OUTSIDE CUT

- ▶ Deheads in less than two minutes
- ▶ Removes entire drum head/chime
- ▶ Easy for flattening and recycling
- ▶ Universal to cut all drum sizes
- ▶ USDA compliant parts and approved cutting method



## G-Series (Industrial/Reusable)

### Automatic Air

- ▶ Large quantity of drums
- ▶ 1/2 HP, Variable speed, 4 vane reversible air motor, 30:1 gear reducer
- ▶ Shipping weight: 84 lbs.
- ▶ Dimensions: 29" x 29" x 13"

### Manual Air

- ▶ Use in industrial settings with wet surfaces
- ▶ 1/2 HP, variable speed, 4 vane reversible air motor, 30:1 gear reducer
- ▶ 80-100 PSI, 25 CFM, airline filter and lubricator suggested
- ▶ Shipping weight: 80 lbs.
- ▶ Dimensions: 29" x 29" x 13"

### Electric

- ▶ Quiet operation
- ▶ 1/3 HP, 110V, 60Hz, single phase, full load amps 5.7 and 220 in/lbs torque
- ▶ Shipping weight: 80 lbs.
- ▶ Dimensions: 29" x 29" x 13"



### INSIDE CUT

- ▶ Deheads 30-55 gallon drums in less than a minute
- ▶ Safe - No jagged edges
- ▶ Retains drum's usability as a safe container
- ▶ Universal to cut all drum sizes



## J-Series (Disposable)

### Automatic Air

- ▶ Large quantity of drums
- ▶ 1/2 HP, Variable speed, 4 vane reversible air motor, 30:1 gear reducer
- ▶ Shipping weight: 84 lbs.
- ▶ Dimensions: 29" x 29" x 13"

### Manual Air

- ▶ Use in industrial settings with wet surfaces
- ▶ 1/2 HP, variable speed, 4 vane reversible air motor, 30:1 gear reducer
- ▶ 80-100 PSI, 25 CFM, airline filter and lubricator suggested
- ▶ Shipping weight: 80 lbs.
- ▶ Dimensions: 29" x 29" x 13"

### Electric

- ▶ Quiet operation
- ▶ 1/3 HP, 110V, 60Hz, single phase, full load amps 5.7 and 220 in/lbs torque (optional 220v, single phase, 50-60 Hz)
- ▶ Shipping weight: 80 lbs.
- ▶ Dimensions: 29" x 29" x 13"



### OUTSIDE CUT

- ▶ Deheads in less than two minutes
- ▶ Removes entire drum head/chime
- ▶ Easy for flattening and recycling
- ▶ Universal to cut all drum sizes



## Manual Deheader

- ▶ No electricity required
- ▶ Inside chime cut
- ▶ Safe, burr-free edge
- ▶ Ratchet-style mechanism
- ▶ Low drum volume
- ▶ Cutting blade: 2 $\frac{3}{4}$ " hardened steel
- ▶ Length: 19" fully extended
- ▶ Weight: 7 lbs.



## WIZ-Kid Units

### Manual

- ▶ No electricity required
- ▶ Inside chime cut
- ▶ Safe, burr-free edge
- ▶ Low drum volume
- ▶ Dimensions: 20" x 11" x 12"
- ▶ Shipping weight: 25 lbs.



### Electric

- ▶ Electric-propelled
- ▶ Inside chime cut
- ▶ Safe, burr-free edge
- ▶ Low to moderate drum volume
- ▶ 220v available
- ▶ 1/8 HP, 110v, 60HZ AC motor
- ▶ Dimensions: 32" x 12" x 12"
- ▶ Shipping weight: 34 lbs.

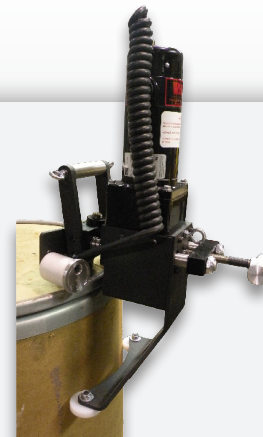




# Fiber Dechimers

## Portable

- ▶ Low to moderate drum volume
- ▶ Quiet motor and tangle-resistant cord
- ▶ Reduces waste, hauling, storage, landfill costs
- ▶ Shipping weight: 34 lbs
- ▶ Removes chimes in less than one minute
- ▶ 1/8 HP enclosed, AC rectified for AC power, 38 rpm, 115v & 220v, 1.3 amps



## Stationary

- ▶ Moderate to high volume of drums
- ▶ Simultaneously remove top and bottom chimes
- ▶ Computer controlled height adjustment
- ▶ Durable and easy to use
- ▶ Motors: (Cutting) 1/4 HP enclosed, 130v, 42 rpm, 270in/lbs torque, 1.8 amps, DC (Adjusting) 1/4 HP enclosed, 130v & 220v, 250 rpm, 45in/lbs torque, 1.8 amps, DC



## Accessories

### Universal Drum Plug Wrench (Bung)

- ▶ Heavy-duty construction
- ▶ Available in cast iron or non-ferrous bronze



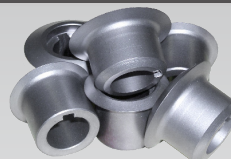
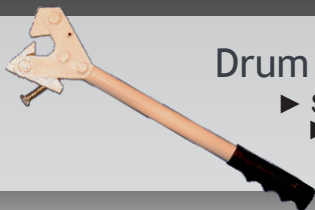
### Dekinker

- ▶ Provides great clamping power
- ▶ Heavy-duty "railroad quality" construction



### Drum Head Lifter

- ▶ Strong heat-treated steel jaws
- ▶ Works with all US and foreign-made drums

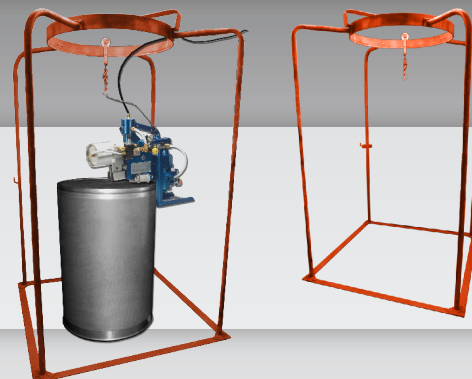


### Cutter Wheels

- ▶ Inside or outside cut replacements or stock

## Support Tower

- ▶ Increases productivity
- ▶ Reduces operator strain and fatigue
- ▶ Keeps power cord out of the way and prevents tangling
- ▶ Suitable for portable or permanent installation



## About Us

More than 50 years ago, Wizard® Drum Tool Company introduced the original powered drum deheader. Over the years, we've continued to innovate, refining our products and expanding our offering. We've earned a reputation for providing thoughtfully designed products built with superior materials and expert craftsmanship. Today we are proud to offer the only full line of drum deheading equipment.



400 Pilot Court Waukesha, WI 53188 USA  
(800)952-0121 | (262)548-8910 | F(262)548-8908  
[www.wizarddrumtool.com](http://www.wizarddrumtool.com) | [www.drumsolutions.com](http://www.drumsolutions.com)

©2011 Wizard Drum Tool Co. All Rights Reserved. Wizard Drum Tool Co. is a division of Hydro-Thermal Corporation.